

# JuliaPro

(v1.0.1.1)

## Installation Manual and Quickstart Guide

### Contents

1. *Objective*
2. *Prerequisites*
3. *Installing JuliaPro*
4. *Using JuliaPro*
  - 4.1. *Launching JuliaPro*
  - 4.2. *Getting Started with JuliaPro*
5. *Trademark Usage*

## 1. Objective

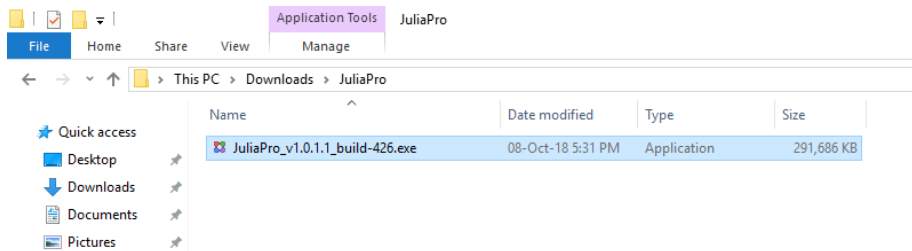
This guide details the installation procedure and usage of the base JuliaPro package and JuliaPro's Juno IDE.

## 2. Prerequisites

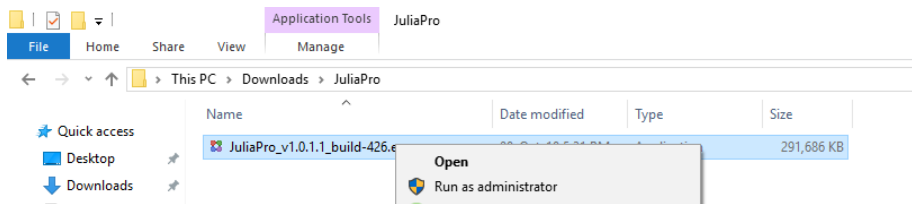
- An appropriate version of Microsoft® Windows®
  - Windows 7 SP1, Windows 8, Windows 8.1, Windows 10
  - Windows Server 2008 R2, Windows Server 2012, Windows Server 2012 R2, Windows Server 2016
- 5 GB of disk space
- Active Internet connection
- LinkedIn or Gmail or GitHub account (Either one of these accounts are required for authentication)

## 3. Installing JuliaPro

Once the requirements are met, you can start the JuliaPro installation using the executable provided.

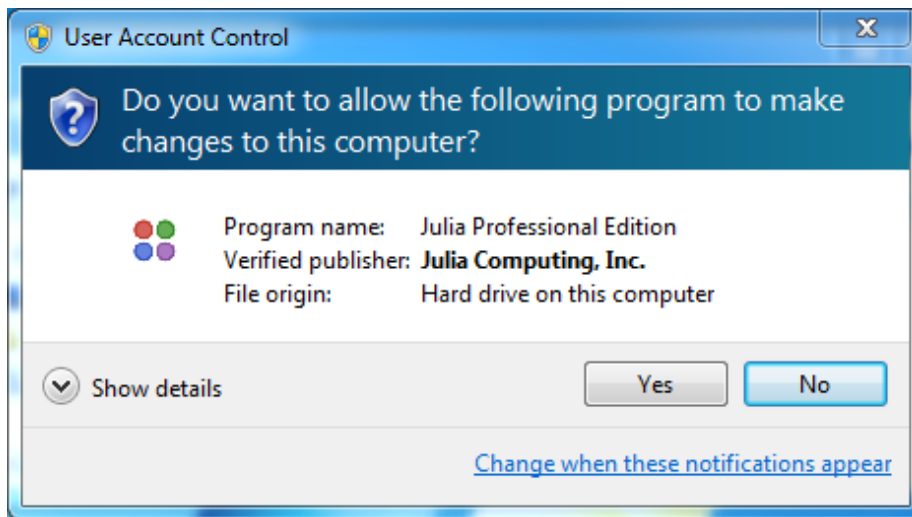


To execute the installer with Administrative privileges, right click on the JuliaPro\_v1.0.1.1.exe and select “Run As Administrator”. To execute the installer as the current user, just double-click on the executable.



Upon launching the executable, you might be presented with a User Account Control permissions window.

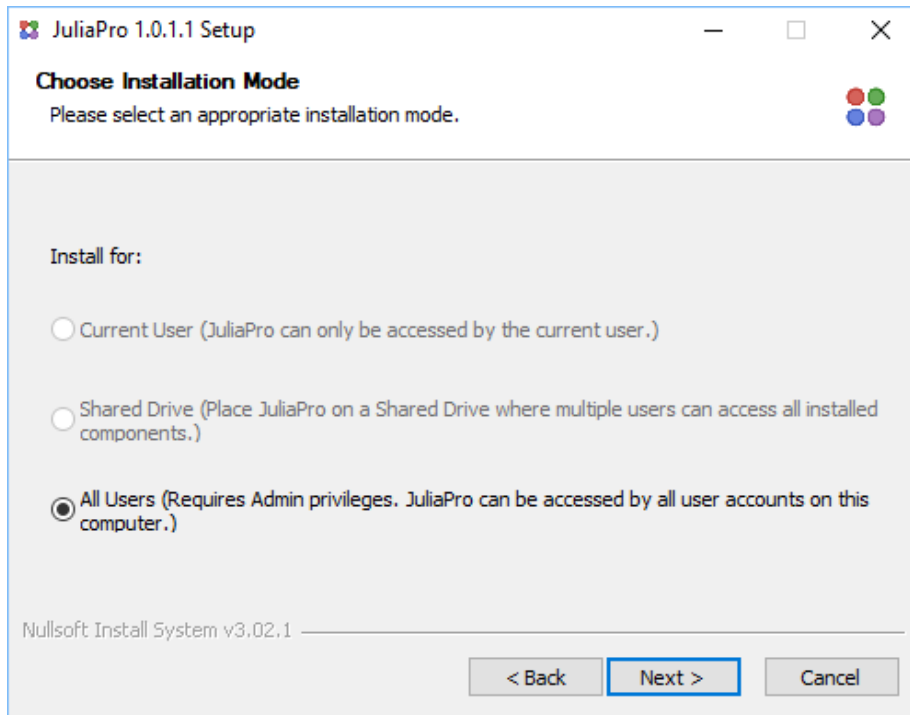
If the installer is being executed with Administrative privileges, then click “Yes” to proceed with the installation.



Upon starting the installation, you will be presented with the JuliaPro Software License Agreement. After reading through the terms mentioned in the agreement, click “I Agree” if you accept the terms of the license and proceed with the installation.

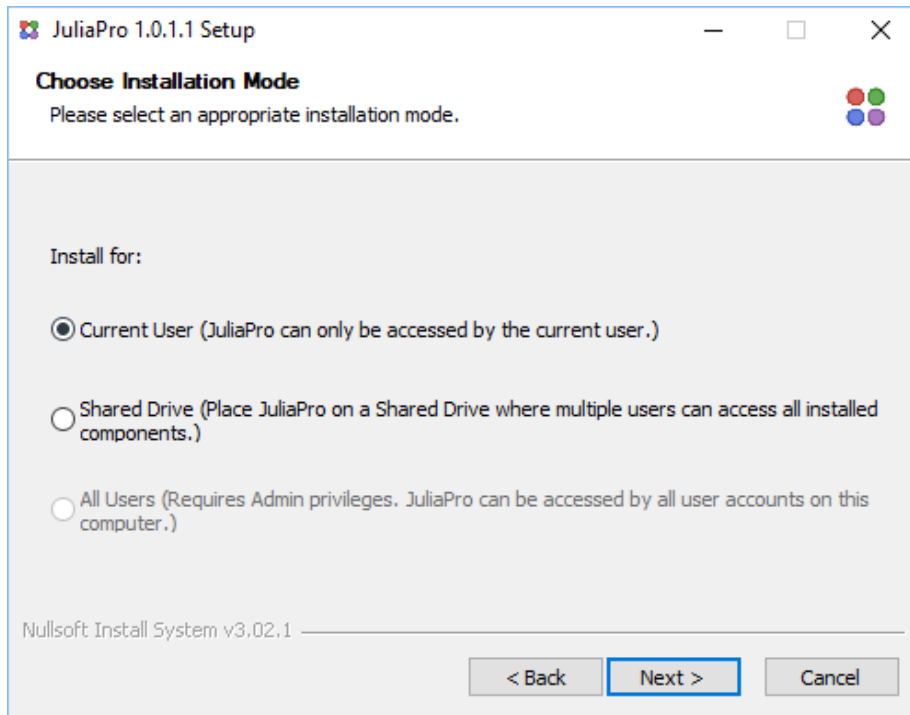


If the installer is being executed with Administrative privileges, then you will be presented with the following installation option:



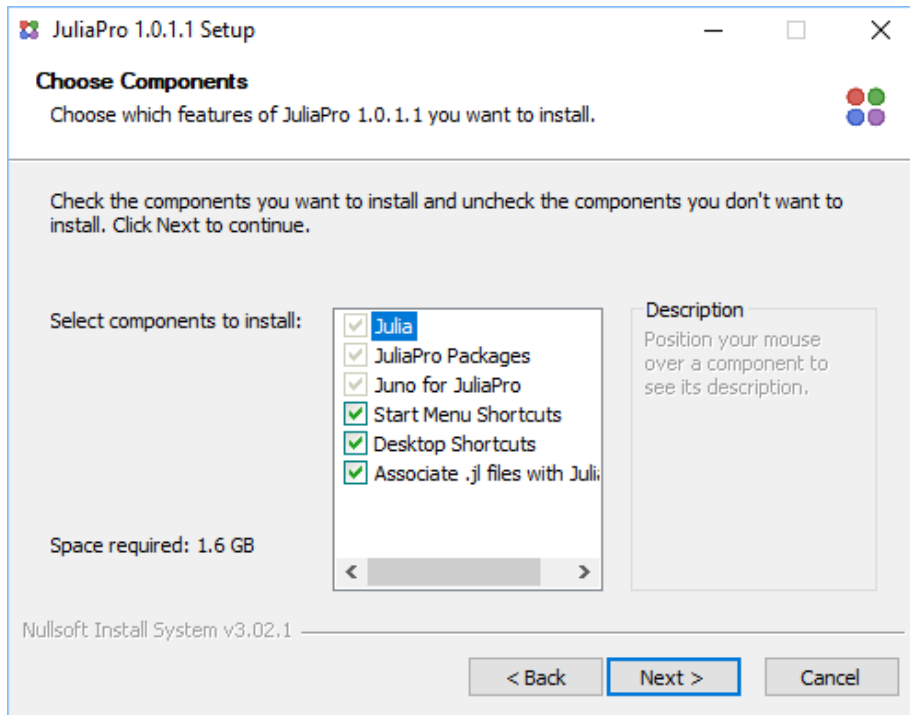
- **All Users:** This installation option requires the current user to have Administrator privileges and will default to installing JuliaPro to a location available to all system users. The default location is a folder created at the location of the current %HOMEDRIVE% environment variable. Selecting this option also allows for a user with Administrative privileges to install Julia Professional to a shared network drive location.

If the installer is being executed without Administrative privileges, then you will be presented with the following two active installation options:



- **Current User (No Admin Privileges Required):** With this installation option, the selected directory into which JuliaPro is installed must be a directory for which the current user has read/write privileges. The default directory chosen is within the “AppData” directory of the current user’s account.
- **Shared Drive (No Admin Privileges Required):** With this installation option, the selected directory into which JuliaPro is installed can be a shared network drive location for which the current user has read/write privileges. While the default directory chosen is within the “AppData” directory of the current user’s account, this option is useful when the current user intends to install Julia Professional to a shared location, but does not have administrative privileges.

After selecting the type of installation to perform, you will be presented with options on which components of the JuliaPro distribution you would like to install.



The first listed component is the Julia compiler, runtime and terminal application. This component is required for installation.

The next listed component is the set of all “JuliaPro packages” to be installed as part of JuliaPro. This component is also required for installation.

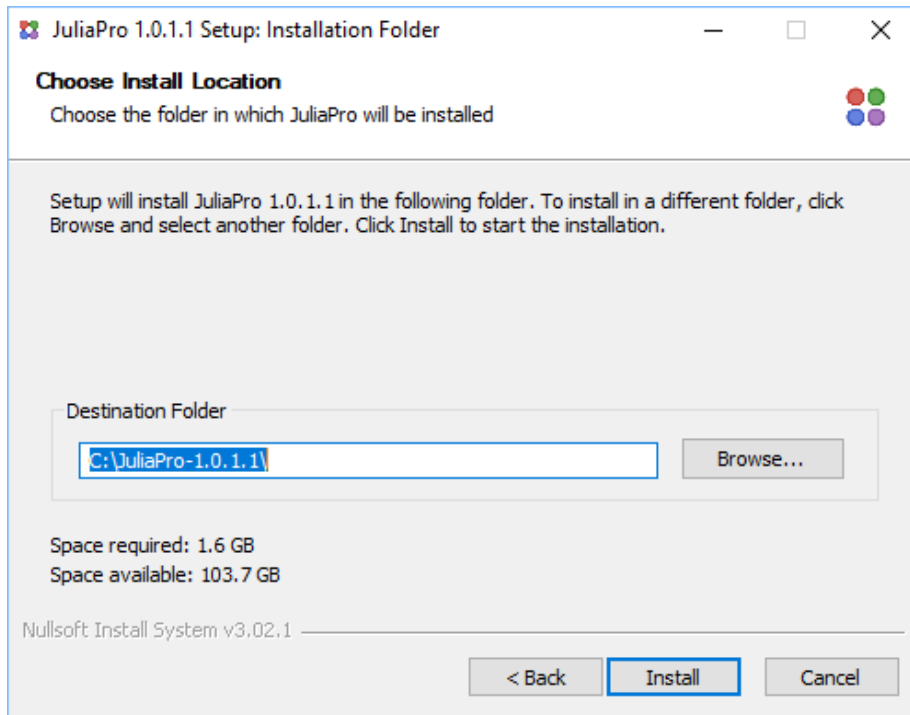
The next listed component includes “Juno for JuliaPro”. Selection of this component will install a copy of the Atom editor onto which various JuliaPro specific enhancements are continually being added.

The subsequent component is the entry for “Start Menu Icons”. By unselecting this entry, no entries for JuliaPro will be added to the Windows Start Menu.

The subsequent component is the entry for “Desktop Shortcuts”. By unselecting this entry, no desktop shortcut icons linking to various JuliaPro components are created.

The final component is the entry for “Associate .jl files with JuliaPro”. By unselecting this entry, “.jl” will no longer be associated with JuliaPro.

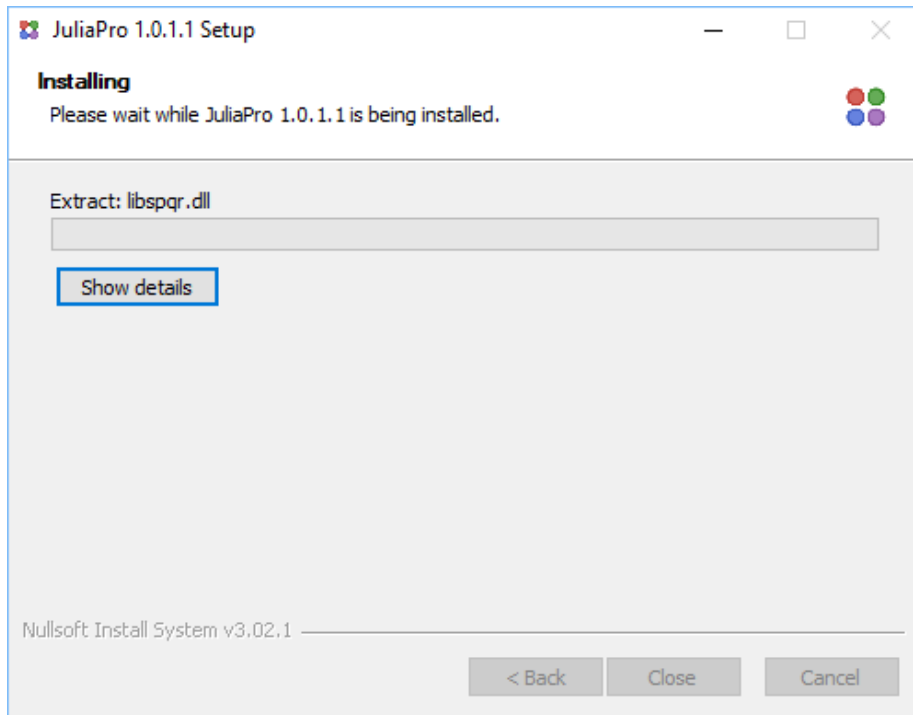
Upon selecting your desired components, click “Next” to proceed.



Next, select the folder into which you wish to install JuliaPro. The selection must be a directory into which the current user has read/write privileges. The installer provides an appropriate default location when either the “All Users”, “Current User” options were selected.

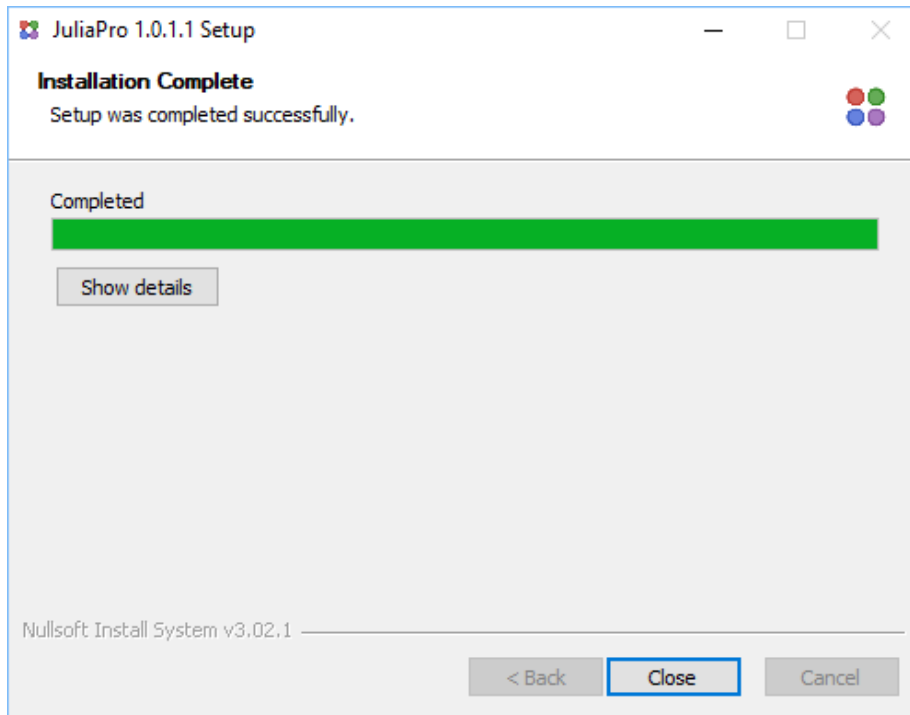
If the “Shared Drive” option was selected by a non-Administrative user, or an Administrative user selects the “All Users” option, then you will likely wish to click the “Browse...” button in order to select a shared network drive location into which to install JuliaPro. Installing JuliaPro to a shared network drive location is useful for teams that plan to share access to a single Julia Professional installation among multiple user accounts on separate machines in the same Active Directory domain.

The following screenshot shows the JuliaPro installer during its installation phase.



Upon completion of the installer, press close to exit the installer.





**NOTE: Setting access permissions on your JuliaPro installation for shared installations.**

For shared network drive installations, if the directory into which JuliaPro was installed is currently accessible by multiple users, then an Administrator may desire to set access permissions for their JuliaPro installation to be read-only for non-Administrative users.

By setting the JuliaPro installation to be read-only, only administrative users will be able to perform operations via Julia's built-in Pkg package manager. Operations such as `Pkg.add`, `Pkg.update`, and `Pkg.rm` can only be performed by users with write access to the `pkgs-1.0.1.1` directory of the Julia Professional installation.

Restricting write access to these directories to a single administrative user will ensure a consistent state of packages for all users of a shared installation.

To prevent unnecessary precompilation of Julia packages from being triggered by separate users, all users accessing a shared drive installation of JuliaPro from a mapped network drive must have the shared drive mapped to the same network drive letter and absolute path.

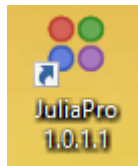
**NOTE: Copying of Atom Configuration Information on First Launch of Juno.**

For shared network drive installation, the first time a user launches Juno from their client machine, a `.atom` configuration folder will be copied from the Julia Professional installation into the directory `%HOMEDRIVE%\%HOMEPATH%\JuliaPro_Juno_1.0.1.1`. This directory stores user specific configuration information for use of Juno for JuliaPro.

## 4. Using JuliaPro

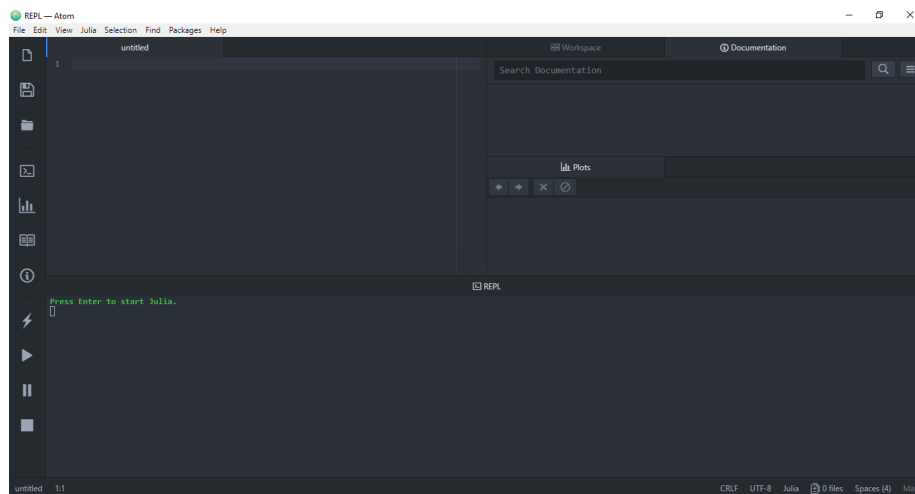
### 4.1 Launching JuliaPro

If the Desktop Shortcuts components were selected during installation of the JuliaPro, then you should have a JuliaPro icon on your desktop. Double-Click on the icon to start IDE.



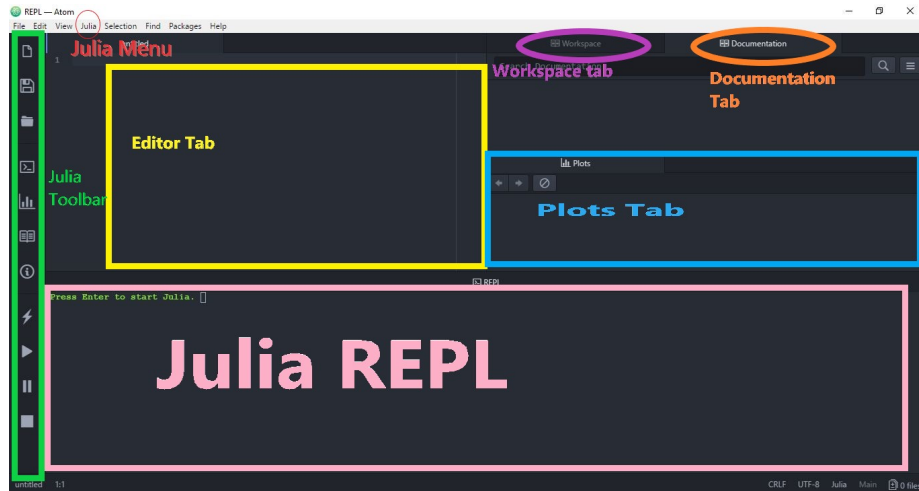
If the Start Menu Shortcuts components were selected during the installation process, then you should have also an entry for the JuliaPro Command Prompt located under “Start -> JuliaPro -> Juno for JuliaPro 1.0.1.1”

Upon initially launching Juno, you will be presented with the following window.

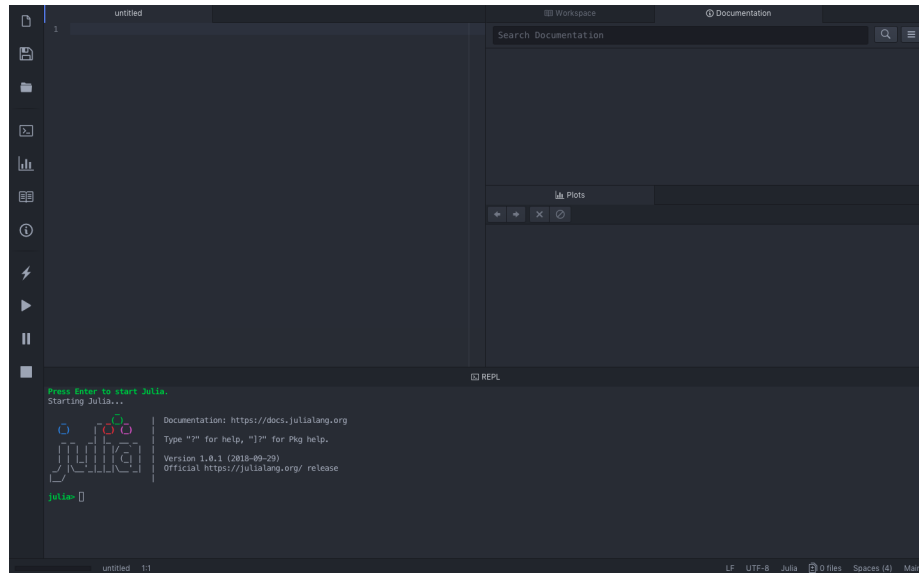


## 4.1 Getting Started with JuliaPro

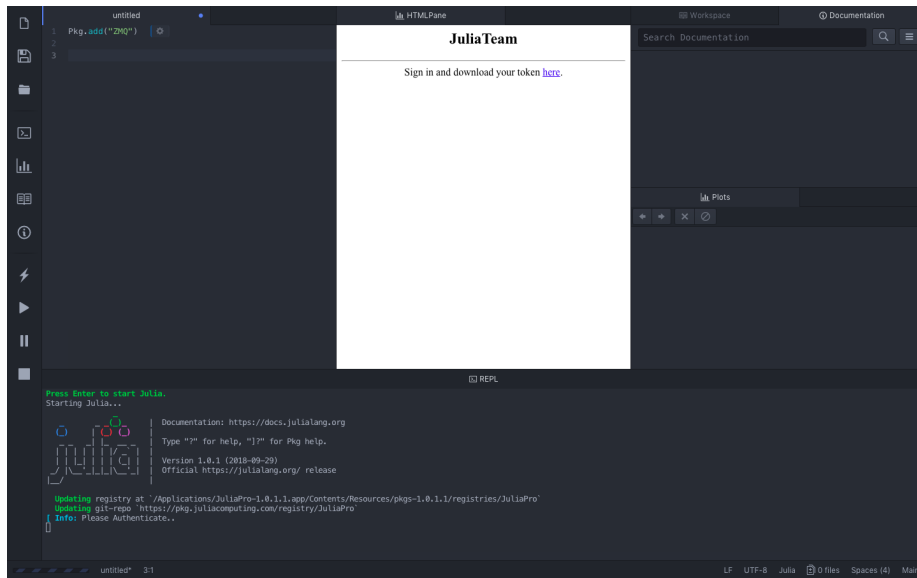
Naming convention for different layout (Panels) in Juno IDE can be seen below



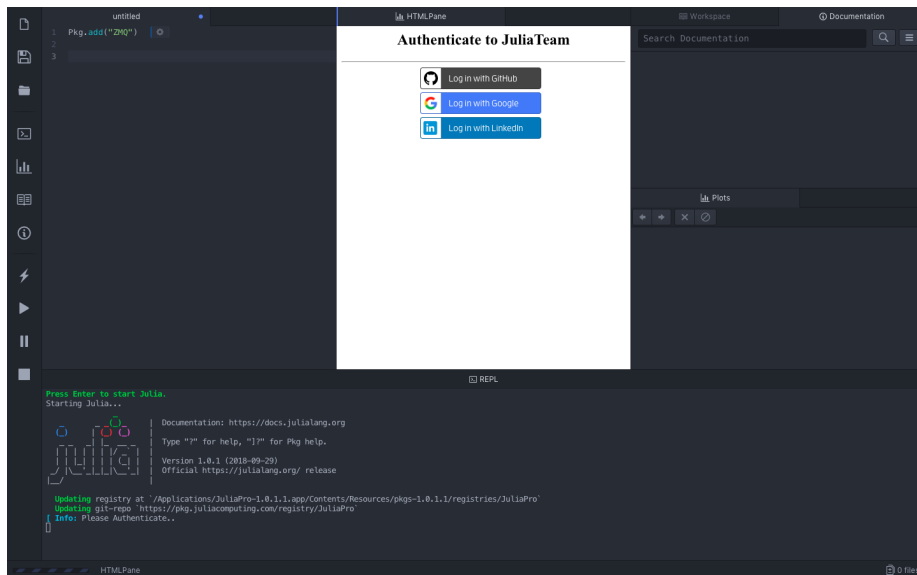
You can start Julia by pressing enter in “Julia REPL” pane



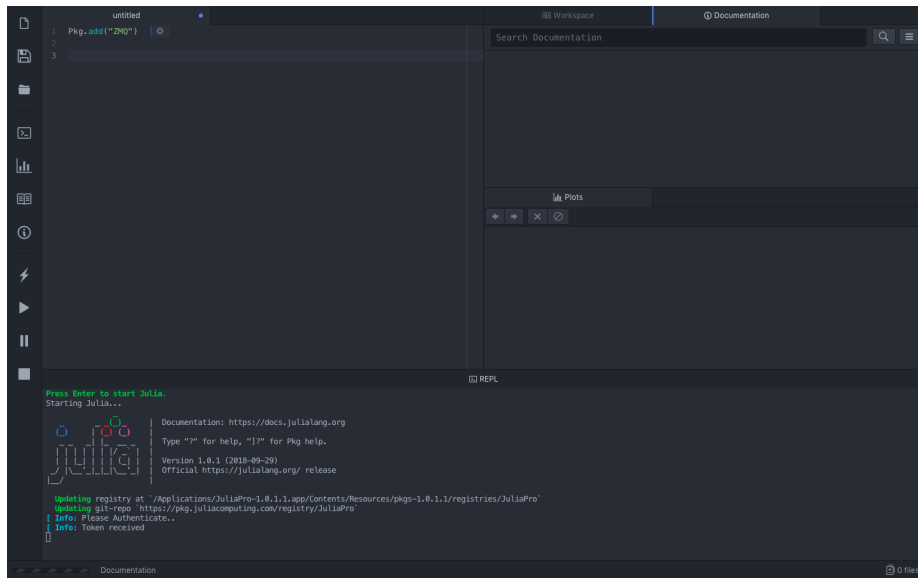
By default, JuliaPro will download all the packages from `pkg.juliacomputing.com`, this website requires authentication, hence, you will go through the authentication process the first time you perform a Pkg operation in JuliaPro, JuliaPro will download a token for you once you successfully authenticate, this token will be reused in your subsequent Pkg operations



Once you click on “here” URL link, you will be directed to authenticate by signing into either one of these accounts : LinkedIn or Gmail or GitHub account.



Once the authentication is done, you will get a message in Julia REPL saying “Token received”



Your `Pkg` operation should continue as is, all your subsequent `Pkg` operations will use the token that JuliaPro just downloaded.

## 5. Trademark Usage

Microsoft® and Windows® are registered trademarks of Microsoft Corporation. Other names may be trademarks of their respective owners.